

COVID-19 Screening Decision Tree

Student or staff member complains of COVID-19 or MIS-C symptoms.

Call 9-1-1 (EMS) if any the following symptoms are exhibited

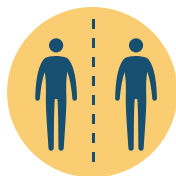
- +Difficulty or Rapid Breathing
- +Chest Pain
- +Pulse O₂ <92%
- +New Confusion
- +Bluish Lips/Face
- +Unable to wake or stay awake

NO



Mask student or staff member

Place student in isolation area away from others



Staff should go home immediately and consult a healthcare provider.

Questions to ask:

1. When did symptoms appear?
2. Recent COVID-19 exposure?
3. Signs and Symptoms (*see list on back*)
4. Temp > 100.4 or school board policy if lower
5. +Pulse O₂ <92%

Verbal, Visual, & Physical concerns out of range?

NO

Allow to rest for 10 minutes

Improving? NO

YES

Back to Class

YES

- +Isolate
- +Send home ASAP
- +Contact Medical Provider
- +Contact Public Health

FOLLOW-UP WITH

- +Student/family
- +Health Services
- +Administrator

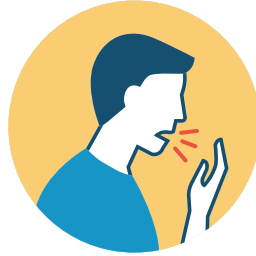
Symptoms of COVID-19



CONGESTION
OR RUNNY NOSE



FEVER 100.4*
*or school board policy
if threshold is lower



COUGH



SHORTNESS OF BREATH OR
DIFFICULTY BREATHING



DIARRHEA



NAUSEA



SORE THROAT



MUSCLE PAIN
AND FATIGUE



CHILLS



NEW LOSS OF TASTE
OR SMELL

**Usually presents with more than one symptom.*

Look for emergency warning signs* for COVID-19. If someone is showing any of these signs, seek emergency medical care immediately

*Difficulty or rapid breathing

*Persistent pain or pressure in the chest

*New confusion

*Inability to wake or stay awake

*Bluish lips or face

*Stomach Pain

**This list is not all possible symptoms. Please call your medical provider for any other symptoms that are severe or concerning to you.*

**Call 911 or call ahead to your local emergency facility:
Notify the operator that you are seeking care for someone who has
or may have COVID-19.**

Symptoms of MIS-C

*Rash

*Red Eyes

*Cracked/Swollen Lips

*Red/Swollen Tongue

*Swelling Hands/Feet

*Stomach Pain